

Macintosh®, Windows®
Silicon Graphics®, and Sun™

Adobe® Collector's Edition

Initial Caps

**Five colorful clip-art
packages to grace
your designs**

The Adobe Collector's Edition:
Initial Caps packages 1 through
5 are unique collections of
capital letters that add elegance,
artistry, and liveliness to your
documents. Choose from this
stunning variety, including
flourished letters evocative of
early illuminated manuscripts
and modern, textured charac-
ters, to create your own works
of art.



Adobe Collector's Edition

Package 1

The Rosemont BED AND BREAKFAST



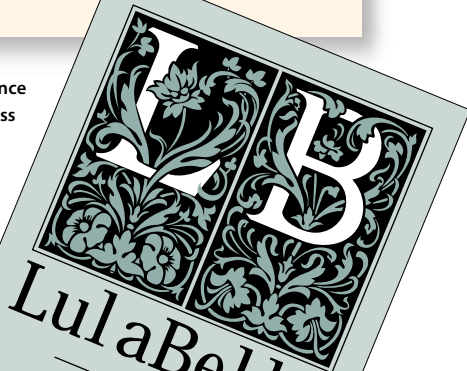
We are pleased to have you as our guest at the Rosemont Bed and Breakfast. It is our pleasure to do everything we can to make your stay here as comfortable and restful as possible. We serve breakfast and dinner daily, and you will find the menu for the week posted in the dayroom downstairs. You may dine with other visitors in the Gardenia Room, or, if you prefer, you may request room service. Please reserve your meals with the concierge a day in advance.

We invite you to explore the gardens and grounds at your leisure. A ten-minute walk beyond the gardens will lead you to an ancient evergreen forest and a stream, and the ocean is a fifteen-minute walk to the east of Branchton village. We have bicycles that you may take out for the day, and our kitchen can provide you with picnic lunches.

Our concierge will be happy to give you information about places of interest as well as make reservations for you at local restaurants and special events.

Should you require anything at all, please do not hesitate to let us know.

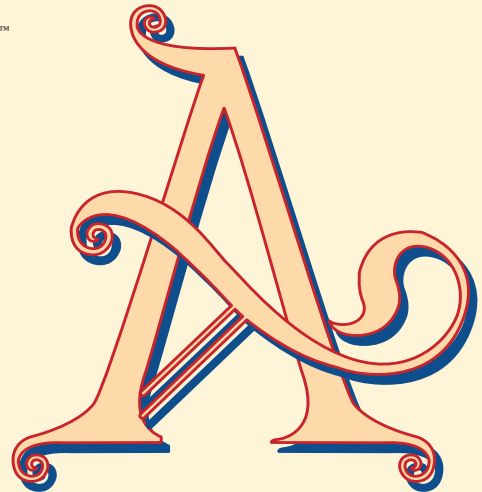
Use initial caps to announce yourself and your business in print. Shown above: Aridi Vincente. At right: Aridi Victoriana.



LulaBelle

Lula Belle Barrington
1000 Lonsdale Avenue
Dayton, Ohio 45419
(513) 555-2787

Aridi Nabel™



Aridi Lubna™



Aridi Gothic™

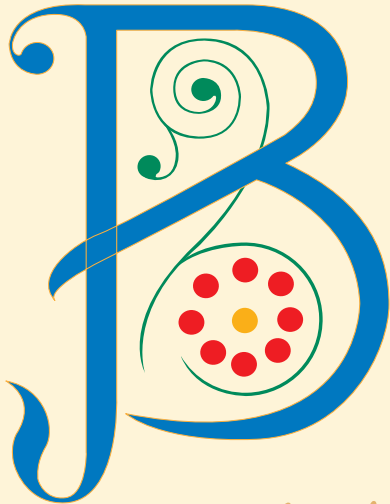


Package 2

Aridi Romant™



Aridi Spring™



Aridi Royal™



Package 3

Aridi Napoli™



Aridi Rock™



Aridi Regal™



Package 4

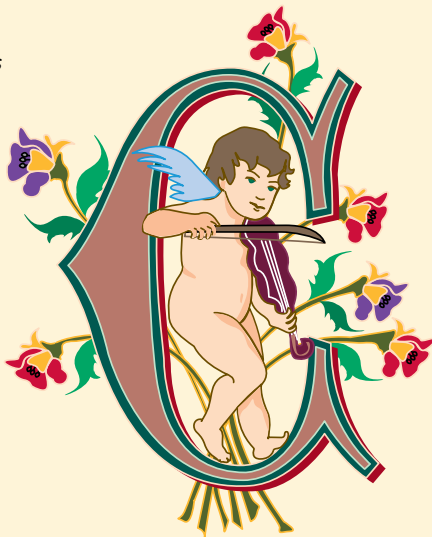
Aridi Vincente



Aridi Masselle

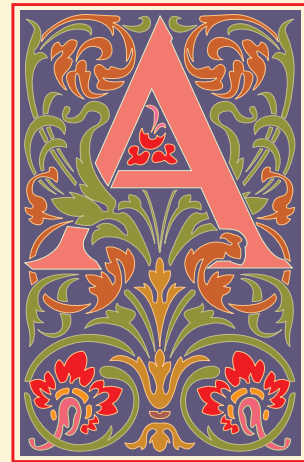


Aridi Cherubs

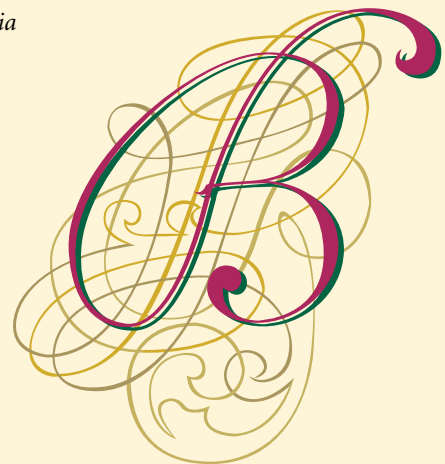


Package 5

Aridi Victoriana




Aridi Fantasia



Aridi Rosette





Colorful clip-art letters add sparkle to your designs.

Initial Caps Packages 1 through 5

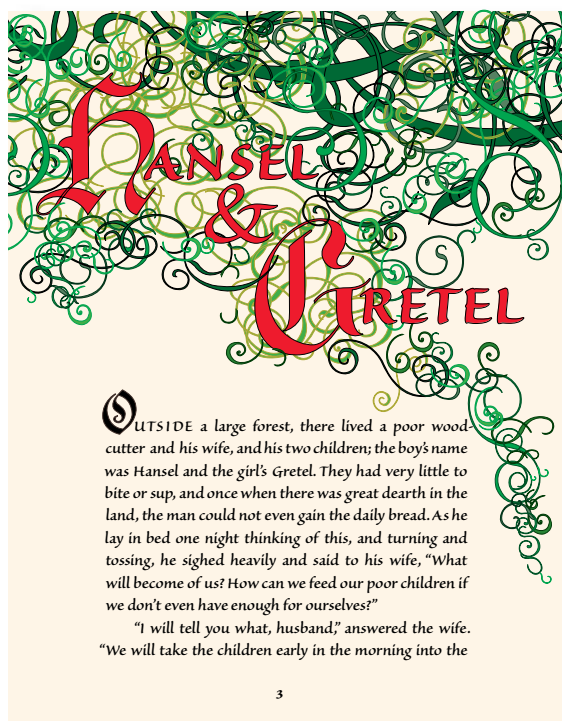
Put the Crowning Touch on Your Designs

When you want a touch of class, try the Adobe Collector's Edition: Initial Caps collection. Inspired by artwork of eras past, these five decorative clip-art assortments by Marwan Aridi are rich with texture, evoking everything from stained glass to embroidery. Use Initial Caps to enliven book and newsletter text, stationery, posters, greeting cards, and other projects.

Each volume contains three complete roman alphabets—78 characters total. And they come in full-color CMYK Encapsulated PostScript (EPS) language files, so you can drop them right into your favorite presentation, publishing, or word processing application. You can even edit the graphics or use portions of them separately, using Adobe Illustrator® or other graphics programs.



You can design an impressive-looking graphic either by creating multiple shades of one color or by applying multiple colors. Shown above: Aridi Romant. Above left: Aridi Lubna.



Use each clip-art letter as is, or use parts of it to further embellish your design. Shown at left: Pieces of Aridi Gothic. Below: Aridi Rock.





Shown left: Aridi Royal.
Below: Aridi Napoli.



Contents

- Clip-art letters in full-color EPS files, created with Adobe Illustrator software (saved as Adobe Illustrator version 1.1 files)
- Electronic Quick Reference card in the Adobe Portable Document Format, located in the Documentation folder

Macintosh System Requirements

- Macintosh computer, including Plus, SE, SE 30, II family, Classic®, PowerBook®, Portable, Macintosh Centris®, Macintosh Quadra®, Performa®, and Power Macintosh®
- Apple® System Software version 6.0.7 or later (version 7.0 or later recommended; for version 6, 32-bit QuickDraw™ is required)
- Hard disk (minimum 10 MB) and high-density disk drive (1.44 MB)
- Minimum 5 MB of RAM recommended

PC System Requirements

- Microsoft® Windows 3.0 or later
- IBM® PC, PS/2®, or 100-percent compatible using a 386 or faster processor

- Hard disk (minimum 10 MB)
- Minimum 5 MB of RAM recommended

Silicon Graphics System Requirements

- Silicon Graphics workstation with R3000 or faster processor
- IRIX™ 5.2 or 5.3 operating system software
- CD-ROM drive
- 20 MB of available hard disk space

Sun System Requirements

- Sun SPARCstation® 2, IPX™ or faster-processor workstation
- Solaris® 2.3 or 2.4 operating system software
- CD-ROM drive
- 20 MB of available hard disk space

Compatibility

- All major Macintosh, Windows, and UNIX® applications that support placed EPS files
- Any Adobe PostScript™ printer or compatible graphic output device

Licensing

Clip-art in these packages is licensed to the customer for installation on one CPU. For full details, refer to the license agreement inside the documentation folder, or contact Adobe.

For More Information

Call 1-800-682-3623 in the U.S. and Canada. In other countries, please refer to the contact numbers in the Type On Call purchaser.

Adobe Systems Incorporated
1585 Charleston Road, P.O. Box 7900
Mountain View, CA 94039-7900 USA

Adobe Systems Europe Limited
Adobe House, Mid New Cultins
Edinburgh EH11 4DU
Scotland, United Kingdom

Adobe Systems Co., Ltd.
Yebisu Garden Place Tower
4-20-3 Ebisu, Shibuya-ku
Tokyo 150 Japan

This brochure was created with Adobe PageMaker®, Adobe Photoshop®, and Adobe Illustrator software and font software from the Adobe Type Library.

Adobe, the Adobe logo, Adobe Illustrator, Adobe Photoshop, PageMaker, and PostScript are trademarks of Adobe Systems Incorporated. Aridi Gothic, Aridi Lubna, Aridi Nabel, Aridi Napoli, Aridi Regal, Aridi Rock, Aridi Romant, Aridi Royal, and Aridi Spring are trademarks of Aridi Computer Graphics, Inc. Apple, Macintosh, Macintosh Centris, Macintosh Quadra, Performa, PowerBook, and Power Macintosh are registered trademarks and QuickDraw is a trademark of Apple Computer, Inc. Classic is a registered trademark licensed to Apple Computer, Inc. IBM and PS/2 are registered trademarks of International Business Machines Corporation. Microsoft and Windows are registered trademarks of Microsoft Corporation in the U.S. and other countries. Silicon Graphics is a registered trademark and IRIX is a trademark of Silicon Graphics, Inc. Solaris is a registered trademark of Sun Microsystems, Inc., which has not tested or approved this product. IPX and Sun are trademarks of Sun Microsystems, Inc. SPARCstation is a registered trademark of SPARC International, Inc. licensed exclusively to Sun Microsystems, Inc. and is based upon an architecture developed by Sun Microsystems, Inc.

Copyright © 1995 Adobe Systems Incorporated. All rights reserved. 10/95